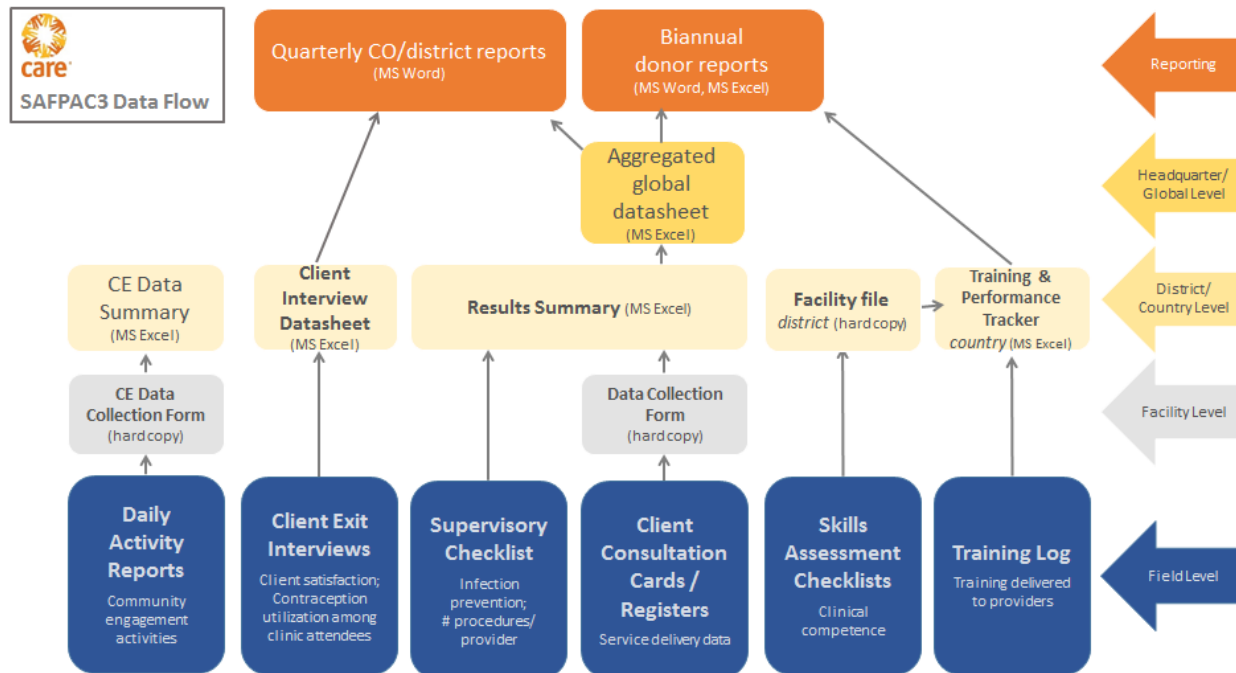


Rattan J, Noznesky E, Hwang S, Galavotti C, Curry DW, Rodriguez M. Rapid contraceptive uptake and changing method mix with high use of long-acting reversible contraceptives in crisis-affected populations in Chad and the Democratic Republic of the Congo. *Glob Health Sci Pract*. 2016;4 Suppl 2:S5-S20. <http://dx.doi.org/10.9745/GHSP-D-15-00315>

SUPPLEMENTARY MATERIAL. SAFPAC Monitoring and Evaluation Data Flowchart



Abbreviations: CO, country office; CE, community engagement; SAFPAC, Supporting Access to Family Planning and Post-Abortion Care.

* To learn more about these tools, visit:

<http://familyplanning.care2share.wikispaces.net/SAFPAC+Monitoring+%26+Evaluation>.